



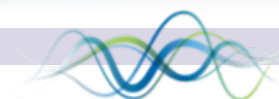
**STOPSLEY
HIGH SCHOOL**
Ambition | Endeavour | Success

MAKING CHOICES

SUBJECT GUIDE

2024-2026

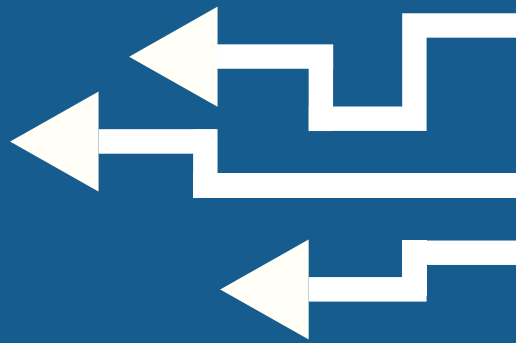
BOOKLET



MLT MIDDLESEX
LEARNING TRUST

Contents

Overview for Students	2
The KS4 Curriculum	3
Qualifications Explained	4
Careers Education, Information, Advice and Guidance Websites that might help you	5-6
Art	8
Childcare and Development	9
Computer Science	10
Construction	11
Creative iMedia	12
Dance	13
Design Technology	14
Drama	15
Ethics and Philosophy	16
Food Preparation and Nutrition	17
French	18
Geography	19
History	20
Music	21
Physical Education	22
Sociology	23
Spanish	24
Options 2023 - Timetable	25
Options Form	26



Overview

Welcome to the Making Choices Booklet. You are about to make some very important decisions about your future as you choose the subjects that you wish to study in Years 10 and 11 (Key Stage 4).

Achieving good GCSE grades is vital so that you have as much choice as possible at the end of KS4. Your job now is to work with us to make sure you achieve the best possible qualifications at the end of Key Stage 4 (KS4).

This booklet is intended to give you all the information you need to help you make an informed choice, so you need to read it very carefully. Read about each subject and what it has to offer you. Talk to your parents, your subject teachers, your form tutors and students in Year 10 who are the first year group to experience the new GCSEs. It is important to make your choices wisely as they may affect your post 16+ choices.

The number of students who choose each subject may affect whether we can offer the subject or not. It is important to be aware that we cannot always guarantee your first choices, but we will make every effort to do so. We will work with you to ensure you will be successful in the subjects that you study. We do our best to provide the course that you want. Timetable and staffing restrictions mean that some changes may be necessary, but we will try and keep these to a minimum and always communicate these with you.

We will be inviting you to attend a face to face meeting on 25th March 2024 to be able to submit your GCSE choices. Please keep this date in your diaries so that you can attend this face-to-face meeting in school.

As a year group you have impressed us greatly to date and we are sure that you will have a successful KS4.



CORE

Everyone must study these:

- English Language
- English Literature
- Mathematics
- Science
- Physical Education
- PSHCE & Ethics

HUMANITY OPTION

You will choose a Humanity:

- Geography
- History

History and Geography are considered as 'facilitating' subjects by universities. Facilitating subjects give you access to study a wide range of courses at A level and degree level which is why we have made studying a Humanity option compulsory for students.

DO and DON'T

- You CAN choose both History and Geography
- You CANNOT choose the following subjects together:
 - Construction, DT, and Food & Nutrition
 - PE and Dance
 - Computer Science and Creative iMedia

OPEN OPTIONS

You will then study 3 options from the choices below:

- Art
- Child Development
- Computer Science
- Construction and the Built Environment
- Creative iMedia
- Dance
- Design Technology
- Drama
- Ethics & Philosophy
- Food Preparation and Nutrition
- French
- Geography
- History
- Music
- PE
- Sociology
- Spanish

In order to give you the best possible choices at A Level, and if you are considering applying to a top University, we suggest you should study the subjects that make up the English Baccalaureate. The English Baccalaureate is awarded to students who achieve a GCSE at 9 to 4 in English Language or Literature, Mathematics, two Sciences (including Computer Science) a Modern Foreign Language and a Humanities subject; History or Geography.

Studying a language can have a significant benefit going forward in your education and is looked on favorably by universities and employers.

We suggest that you aim to choose a balanced choice of subjects.

GCSE

GCSEs have undergone a significant reform resulting in curriculum changes across all subjects with the aim of specifications becoming more challenging, with a greater amount of content covered.

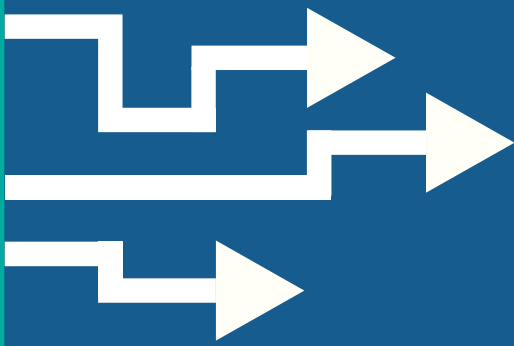
The reformed GCSEs will use a grading structure, using grades from 9 (the highest) to 1 (the lowest).

New grading structure	Current grading structure
9	A*
8	
7	
6	B
5	
4	
3	D
2	
1	
U	
	E
	F
	G
	U

Technical Awards

Technical awards offered at Stopsley High School are Child Development, Construction and the built Environment and Creative iMedia.

The Technical awards will be graded Level 1 Pass, Level 1 Merit, Level 1 Distinction or Level 1 Distinction*, Level 2 Pass, Level 2 Merit, Level 2 Distinction or Level 2 Distinction*. Please see the individual qualifications for more details.



Careers Education, Information, Advice, and Guidance

Let's start by saying it is perfectly fine to not know exactly what you want to do as a career and have it all mapped out at the age of 14. You are required to attend full time education, start an apprenticeship/ traineeship or attend part time education while working or volunteering for 20 hours a week until the age of 18. You can continue your learning beyond this through University or professional qualifications. This next step in your journey is about making sure that you are able to refine your subject choices to allow you to study your chosen subjects in greater depth and prepare you for your next steps when you eventually leave Stopsley High School. In order for you to make the most of this we wanted to give you a few words of advice.

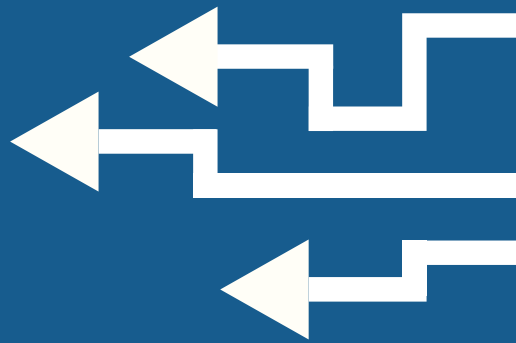
Keep Your Options open

If you're not sure about what you want to do, you want to ensure that you don't close doors on any post 16 pathways you may be interested in. Careers is an area that is constantly changing and it is important to develop the skills that allow you to be able to adapted to the ever-changing world. A varied selection of chosen subjects can allow you to have a greater choice of subjects at college, university or a wider range of apprenticeship options. One way of keeping your options open is by choosing the English Baccalaureate which includes a language and either Geography or History.

Give yourself the best chance of success

Think about the subjects that you enjoy and perform well in. Think about the demands of the courses and what is required. It is worth thinking about your strengths and the skills you have, where your interests lie and what you enjoy- remember you will be spending at least the next two years studying them. If you think you are going to struggle in the subject and put little effort in- it perhaps isn't going to be the right choice for you. You will be spending a good deal of time in lessons, completing homework and revising which will not be as successful if you really dislike the subject.





Think about yourself

It is really important to listen to your subject teachers and staff about the qualifications and what they entail while asking questions to ensure you make an informed decision. You may want to talk to year 10/11 students about the courses and what they involve and talk to the people at home about your thoughts and ideas. It is important that your choices are based around what you want for your future and your interest and passion for the subject. Your choices should not be based upon whether you like the teacher, as teaching staff may change. Nor should you choose subjects because they are the same as your friends are taking; you may not be with your friends and the focus in lessons will be in the learning of the subject- your break time and lunchtime will have a more social focus. Ask yourself why you want to take the subject and be honest, this will allow you to make the right decisions for you.

The Next Stage and The English Baccalaureate (EBacc)

It may seem a long way off, but it is worth considering what you may be interested in taking during the next stage of your education and ensuring that you will have the access requirements for them.

You may have heard of the English Baccalaureate (EBacc). The EBacc is awarded to students who achieve a GCSE at 9 to 4 in English Language or Literature, Mathematics, two Sciences a Modern Foreign Language and a Humanities subject; History or Geography.

History, Geography and Modern Foreign Languages are often considered to be 'facilitating' subjects by further and higher education establishments including some Top Universities.



USEFUL LINKS

Guidance here on the English Baccalaureate - English Baccalaureate (EBacc) - GOV.UK

Website offering some impartial advice - <https://icould.com/stories/choosing-your-gcse-options/>

A range of information and useful videos can be found here to offer some guidance - <https://www.bbc.co.uk/bitesize/articles/zrjh92p>

Information from top universities (Russell Group) on making informed decisions for your future courses. If you have university in mind check here - <https://www.informedchoices.ac.uk/degrees>

A site that offers a range of information on higher education (not only university applications) also option choices, apprenticeships, internships and more - <https://www.ucas.com/>

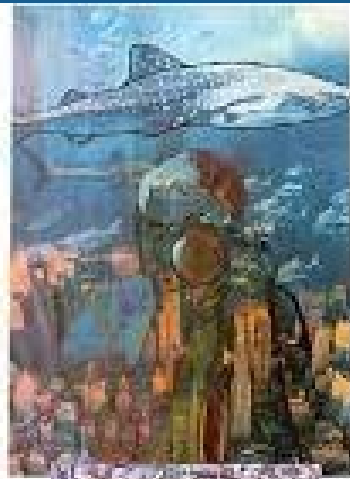
Look here for apprenticeships that are currently being offered and the requirements for them. <https://www.findapprenticeship.service.gov.uk/apprenticeshipsearch>

For more information on the University route - www.unifrog.org (use login)



Career paths you can follow with Art GCSE:

- Architecture/Interior Designer
- Landscape Designer
- Fashion/Textile Designer
- Costume Designer
- Illustrator/Graphic Designer
- Production/Set Design Theatre/TV/Film - Advertising/Marketing
- Jewellery Designer
- Make-up Artist/Tattoo artist
- Art Therapist/Teacher
- Animator



What will you study?

The areas of study in Art are very broad including drawing, painting, sculpture, installation, and mixed media as well as exploring the creative process and building analytical critical thinking skills. A range of specialist workshops such as printing, felt making and acrylic painting broaden skills. The study of different creative approaches to art and exploration of a variety of media, techniques, and materials such as ceramics, printing, photography, and collage gives students the opportunity to discover the creative process and media they prefer. There are the opportunities to develop your own creative ideas and interests and to decide on the direction of your work as you build your coursework portfolio over Years 10 & 11. The portfolio forms 60 % of your exam grade. The remaining 40% is covered by the externally set exam paper. This takes a similar structure to your coursework and ends with a 10-hour practical exam where you will create your final piece.

How might it be useful in the future?

Architects, fashion designers, animators, set designers all started out studying Art at GCSE. Art is an excellent stepping stone on a career in the Arts. Students are encouraged to be creative and critical in their thinking and to explore new ideas. Students have the opportunity in Art to direct their own work and the freedom to be expressive whilst at the same time learning new skills such as printing or working with clay. The creative mindset and critical thinking skills students learn in Art are useful in any career and highly regarded by future employers.

Assessment

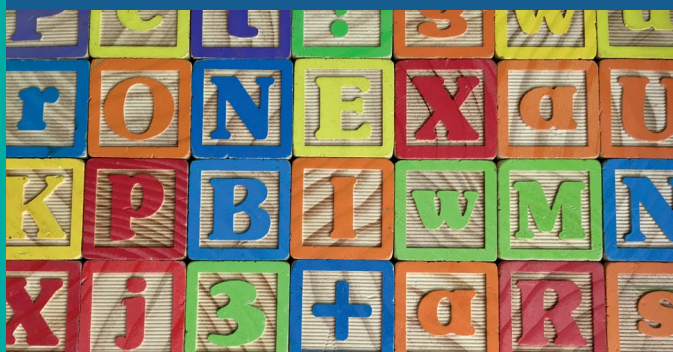
You will be assessed at the end of each project by the teacher. However, great importance will be given to your own self-assessment and ability to recognise your own strengths.

The GCSE course consists of:

Component 1 - Coursework - All the work you do over the two years is Coursework - this will account for 60% of your GCSE.

Component 2 - An Externally Set Assignment - In January of Year 11 students begin the externally set assignment and complete a series of preparatory studies based around one of the themes in the exam paper. This ends with a two day period of supervised exam time when students produce a final piece in response to the theme - the preparatory work and the two days of exam time account for 40% of your GCSE

Level 2 Technical Award in Child Development and Care



Career paths you can follow with a Child Development Qualification:

- Apprenticeships in Early Years Education
- Child Development
- Teacher
- Social Worker
- Nursery/Pre-School Assistant
- Midwifery

What will you study?

Content area 1: Child development

Content area 2: Factors that influence the child's development

Content area 3: Care routines, play and activities to support the child

Content area 4: Early years provision

Content area 5: Legislation, policies and procedures in the early years

Content area 6: Expectations of the early years practitioner

Content area 7: Roles and responsibilities within early years settings

Content area 8: The importance of observations in early years childcare

Content area 9: Planning in early years childcare

How might it be useful in the future?

This course provides an opportunity to acquire knowledge regarding the physical, emotional, and social development of young children, all of which have a profound impact on their future selves as adults.

Learners could progress to level 2 and level 3 qualifications and/or GCSE/A Levels/T Levels in

Early Years, Childcare and Education, Health and Social Care as well as Health Science.

Assessment

1 hour 30 minutes externally set exam paper – 50% of the final awarded grade

14 hours non-exam assessment – 50% of the final awarded grade

The NEA is externally set, internally marked and externally moderated

Overall qualification grades: Level 1 Pass, Level 1 Merit, Level 1 Distinction, Level 2 Pass, Level 2 Merit, Level 2 Distinction or Level 2 Distinction*.

**Career paths you can follow
with a Computer Science
Qualification:**

- Games Developer
- Systems Analyst
- Network Engineer
- Software Application Developer
- Cyber Security Analyst
- Software Engineer
- Web Developer
- Computing Engineer



What will you study?

Component 01: Computer systems

Introduces students to the central processing unit (CPU), computer memory and storage, data representation, wired and wireless networks, network topologies, system security and system software. It also looks at ethical, legal, cultural and environmental concerns associated with computer science.

Component 02: Computational thinking, algorithms and programming

Students apply knowledge and understanding gained in component 01. They develop skills and understanding in computational thinking: algorithms, programming techniques, producing robust programs, computational logic and translators.

How might it be useful in the future?

This course is designed to allow students to develop their programming and problem-solving skills. As well as this, student's use of ICT software is also improved. This qualification will give students experience of working to a brief and programming as they would be expected to do in a professional environment. Students who choose GCSE Computing often progress to study Computing or ICT at A Level, and then move on to study Computing or Engineering at University.

Assessment

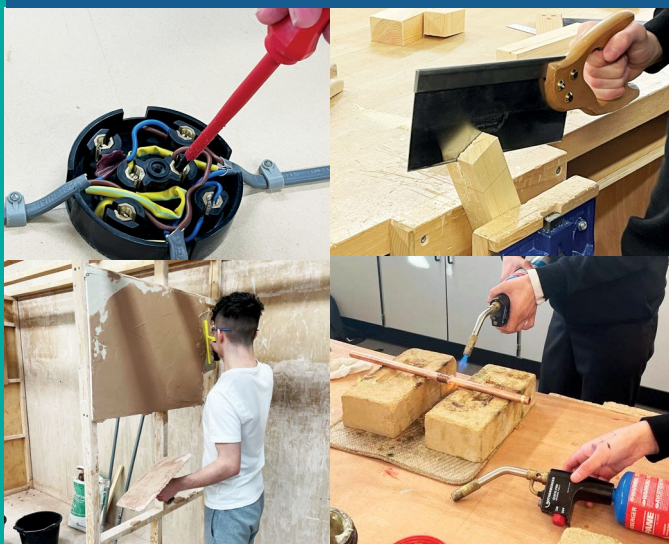
Students will sit two written papers and complete a programming project by the end of Year 11.

Paper 1 – Computer Systems

1 hour 30 minutes – this will account for 50% of your GCSE

Paper 2 – Computational Thinking, Algorithms and Programming 1 hour 30 minutes – this will account for 50% of your GCSE

WJEC: Construction and the Built Environment



Career paths you can follow with a Construction Qualification:

- Plumber
- Electrician
- Bricklayer
- Gas Fitter
- Decorator
- Plasterer
- Joiner
- Surveyor
- Architect
- Quantity Surveyor

What will you study?

Practical areas covered include:

- Plastering
- Electrical Installation
- Bricklaying
- Plastering
- Plumbing
- Decorating

Each unit has a written aspect that directly contributes towards the final grade. Coursework and a final test at the end of Year 11, are combined with practical assessments to achieve an overall final grade. For some elements of the course students will need to ensure that they are wearing suitable clothing and steel toe capped boots

How might it be useful in the future?

The construction course at Stopsley is well established and has developed close links to local companies who regularly employ our students. The WJEC qualification is available at both Level 1 and Level 2, this can lead on to a level 3 course at college or directly into apprenticeship training at sixteen.

Assessment

Level 1/2 Technical Award Construction and the Built Environment
Unit 1: Introduction to the built environment External Written Paper

Unit 3: Constructing the built environment- NEA (written and practical)

Each WJEC Level 1/2 Technical Award in Construction the Built Environment will be graded Level 1 Pass, Level 1 Merit, Level 1 Distinction or Level 1 Distinction*, Level 2 Pass, Level 2 Merit, Level 2 Distinction or Level 2 Distinction*.

**Career paths you can follow
with a Creative iMedia
Qualification:**

- Games Developer
- Comic Book Writer
- Graphic Designer



What will you study?

Students will cover how media is used in advertising to ensure that companies are able to get their meaning across, create impact and appeal to the consumer.

Students will learn how to create digital graphics as well as creating original characters and plan and make animations with audio. Students will also be creating and testing playable games.

How might it be useful in the future?

This allows students to progress towards A levels and Technical Diplomas, Apprenticeships or University in Digital media. Students will develop their research, planning and analytical skills while having opportunities to think creatively, problem solve and practise their digital presentation skills.

Assessment

For this OCR Level 1 / Level 2 qualification, students must achieve three units: one externally assessed and two Non-Examined Assessment (NEA) units.

One mandatory unit assessed by an external exam

One mandatory unit and one optional unit assessed by completing a set assignment that is internally marked and externally verified

GCSE: Dance



Career paths you can follow with a Dance Qualification:

- Dancing professionally
- Dance therapy
- Fitness instructor
- Teaching
- Charity work
- Youth work including activities leader
- Choreographer
- Physiotherapy
- Theatre critic
- Artistic director

What will you study?

Students will study both practical and theoretical elements of dance. The students will explore a range of dance styles with a focus on contemporary dance. They will also study 6 anthology works and their production features such as lighting and costume.. Students will be required to perform as soloists and as part of a group. Students will learn to analyse performances and develop their critical awareness.

How might it be useful in the future?

GCSE Dance isn't just a subject which trains you to become a dancer, although many students progress to take other courses in dance and performing and work in this industry. The course also has many transferable skills which can be applied to other subjects and increase your employability. These skills which student develop include: creativity, collaborative working, self- discipline, communication and leadership skills, confidence, research and development, self- awareness and critical analysis.

Assessment

GCSE dance students will demonstrate their abilities in the three practical elements of the course worth 60%, of the overall grade as well as their theory and understanding in the written paper, worth 40%.

Component 1

60% of overall the overall GCSE grade- 3 Practical performances

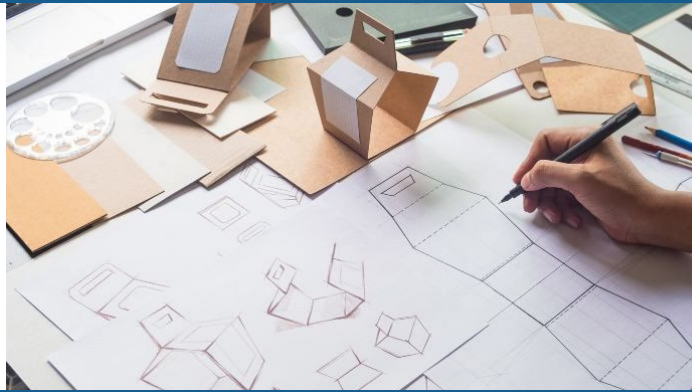
- 1) Solo Set Phrases from the exam board
- 2) Duet/Trio performance created by the students
- 3) Choreography based on stimulus set by exam board

Component 2

40% of the overall GCSE grade

Written exam based on 6 anthologies (variety of dance styles) set by the exam board

- Product designer
- Civil engineer
- Architect
- Mechanical engineer
- Graphic designer



What will you study?

"Students are arriving at medical school without the required manual dexterity to perform simple, necessary surgical tasks such as sewing up patients after operations." Comments made by Prof. R Kneebone as part of a campaign by the Edge Foundation for more creativity in UK school curriculums.

Through a series of activities, which will include designing and making, students will explore a wide range of design technology areas. Students will study the areas of: metals, paper and board, polymers, systems, timbers and textiles. We will also learn about the wider areas of design and production processes.

The course requires a lot of independent working and the ability to see a long project through from brief to a finished product. Students will also need to have a good ability in mathematics and able to transfer skills to other subject areas and personal interests.

Course is assessed by 50% controlled assessment and 50% exam.

How might it be useful in the future?

The course teaches many high level skills such as independent working, problem solving and time management as well as subject specific skills. These skills are highly sort after by both employers and universities. The country needs to fill 2.8 million creative/engineering jobs by 2030 to work in a diverse industry that is worth £71.7billion to the UK economy.

Assessment

Written Exam Component 1 – 1 hour 45 minutes. This will account for 50% of your GCSE.

Non-Examined Assessment – known as NEA or Coursework. There are four parts to the assessment: Investigate, Design, Make and Evaluate. The work will be marked by teachers and moderated by Pearson Edexcel. This will account for 50% of your GCSE.



Career paths you can follow with a Drama Qualification:

- Actor
- Director
- Script writer
- Producer
- Drama therapist
- Theatrical makeup artist
- TV broadcaster
- Arts Administrator
- Set Designer

What will you study?

Drama is a creative and imaginative subject in which students work develop increased self-awareness while working collaboratively with others. The students will explore a wide range of techniques and influences to inform their practical work. Students will learn what it takes to create a performance from conception to the final piece including costume, lighting, sound, backstage organisation, make up and set design in addition to scriptwriting, direction and

How might it be useful in the future?

Students will learn skills in drama that are invaluable for later life. These skills include creativity, planning, organisation, confidence, collaboration, effective communication, improvisation, problem solving, empathy, teamwork, body language and effective use of voice.

Assessment

Component 1- Understanding Drama
Written exam paper
This will account for 40% of your GCSE

Component 2- Devising Drama

Creating a devised drama, performance & evaluation This will account for 40% of your GCSE

Component 3- texts in Practice (practical)
Performance exam
This will account for 20% of your GCSE

GCSE: Ethics and Philosophy

***Career paths you can follow
with an Ethics & Philosophy***

Qualification:

- The legal profession
- Media
- Public and private sectors
- Education
- Police



What will you study?

Throughout the course you will study a range of beliefs and ethical issues such as:

- Christianity
- Religion and life
- Islam
- Crime and punishment
- War and peace
- Relationships

In each topic you will be given the opportunity to debate and explore your own views towards the different beliefs and moral issues that arise. These include issues such as: the death penalty, the use of weapons of mass destruction and many more!

How might it be useful in the future?

This is a subject which embraces the biggest questions in life, such as 'does suffering mean God cannot exist?' and 'should we give people the right to end their lives?' People who study Religion, Philosophy and Ethics think deeply. The topics we investigate will affect all of us on some level at some time in our lives. Ethics and Philosophy allows learners to develop an increased understanding and respect for others and the world around them. Furthermore, the critical thinking skills which you acquire from the course are well respected in many areas of employment and further education.

Assessment

100% Written Examinations, 2 Exams

Component 1 – 1 hour 45 minutes: The study of religions: beliefs, teachings and practices – this will account for 50% of final GCSE

Component 2 – 1 hour 45 minutes: Thematic Studies – this will account for 50% of final GCSE

GCSE: Food Preparation and Nutrition



Career paths you can follow with a Food Preparation and Nutrition Qualification:

- Product Development
- Nutrition/Dietician
- Food Marketing/Production
- Environmental Health
- Hotel Management /Catering positions
- Working in the armed forces
- Nursery / Health care environments

What will you study?

Food preparation and Nutrition is a very exciting and creative subject in which you will be 'learning-through- making', in addition to planning, preparing to cook and present a final menu of three dishes.

Food Preparation and Nutrition involves:

Learning about food, ingredients, processes and techniques; Understanding special diet and allergy requirements; Experimenting, investigating and testing products; Planning and costing a 3 course meal; Developing practical skills when making food products; Managing time allocation for set tasks.

You will have the opportunity to plan, develop and make a creative range of products as part of the Controlled Assessment.

How might it be useful in the future?

As well as learning many practical and life skills, Food Preparation and Nutrition involves developing study skills such as: Food nutrition and health, Food Science, Food safety, Food Choice and Food Provenance. The Food Industry continues to expand and there are a wealth of careers associated with food. The Food industry is one of the largest employers in the UK.

Assessment

Paper 1 Written Exam – 1 hour 45 minutes Theoretical knowledge of food preparation and nutrition from 5 segments; Food, nutrition and health, Food science, Food safety, Food choice, Food provenance.

This will account for 50% of your GCSE

Non-Examined Assessment – known as NEA or Coursework

Task 1: Food investigation

Task 2: Food preparation assessment Students' knowledge, skills and understanding in relation to the planning, preparation, cooking, presentation of food and application of nutrition related to the chosen task.

This will account for 50% of your GCSE

Students will be required to provide their own ingredients as was the case in KS3.

**Career paths you can follow
with a French Qualification:**

- Almost any career in businesses that trade internationally
- Translator
- Interpreter
- Journalist
- Marketing & sales



What will you study?

- You will practise and enhance your language skills in Listening, Speaking, Reading and Writing.
- You will study topics which relate to you and your life on a personal basis, e.g. teenage issues, work related themes, relationships, your personal dreams and aspirations.
- You will study topics about the world in which you live e.g. new technologies, the environment
- You will have opportunities to study songs and texts written by French-speaking artists/writers.

How might it be useful in the future?

You become smarter: studies have shown that learning a foreign language increases the functionality of your brain.

Your English improves: learning a foreign language draws your focus onto the mechanics of language, and the skills that you acquire make you a more effective communicator.

It is estimated that the ability to speak a foreign can add at least 10-15% to your wage. For those looking to stand out in a tough jobs market or to add oomph to their CV when applying for university, learning a language could be just the thing.

Assessment

Listening & Understanding in French written paper – This will account for 25% of final GCSE

Speaking in French – This will account for 25% of final GCSE

Reading & Understanding in French written – This will account for 25% of final GCSE

Writing in French – This will account for 25% of final GCSE



Career paths you can follow with a Geography Qualification:

- Law
- Sales
- Information Technology
- Engineering and Building
- Research
- Design and Media
- Town Planning

What will you study?

Geography helps you to make sense of the world around you. The course will give you the chance to get to grips with some of the big questions which affect our world and understand the social, economic and physical forces and processes which shape and change our world. This course offers students the opportunity to develop skills in the following areas: communication skills, graphical and cartographical skills, technological skills including ICT and GIS, interpersonal skills through debate and discussion, literacy and numeracy skills, problem-solving skills, entrepreneurial skills and awareness of career possibilities. You will study topics such as extreme environments, a range of management of physical landscapes, investigating informal settlements, inequalities, global economics, and resource management.

How might it be useful in the future?

Encourages students to develop their own views, opinions and arguments.
 Explores global sustainability investigating economic, social and environmental issues that affect all our futures.
 Emphasises decision-making and problem-solving skills.
 Helps students understand how we are all connected – local actions have global impacts!
 Data analyses, interpretation and evaluation skills.
 Spatial thinking and interdependence.
 Understanding complex interrelated issues centred on economic and political geography.

Assessment

Paper 1 Physical Geography
 This will account for 35% of your final GCSE

Paper 2 Human Geography
 This will account for 35% of your final GCSE

Paper 3 Issues Evaluation
 This will account for 30% of your final GCSE

Career paths you can follow with a History Qualification:

- The legal profession
- Media
- Public and private sectors
- Education



What will you study?

- Russia and the Soviet Union 1917–41
- Crime and Punishment in Britain, c1000–present day
- Superpower relations and the Cold War 1941–91
- Early Elizabethan England, 1558–88

How might it be useful in the future?

It will help you develop lots of skills that are valued by employers and universities such as logical argument and critical thinking.

You will improve your communication skills, which are important in all subjects and careers.

You will gain a respected academic qualification which is recognised throughout the world.

You will understand more about the world around you, for example the complex relationship between USA and Russia.

Assessment

Thematic Study and Historic Environment – This will account for 30% of your final GCSE

Period Study and British Depth Study – This will account for 40% of your final GCSE

Modern Depth Study – This will account for 30% of your final GCSE

GCSE: Music

Career paths you can follow with a Music Qualification:

- Performer
- Composer
- Music Teacher
- Music Therapist-
- Session Musician
- Artist manager,
- Conductor
- Music journalist



What will you study?

Music at Key Stage 4 allows you to develop your skills in performing, composition and listening.

You will work on solo and ensemble performance pieces, and you will learn to compose your own music. You will continue to develop your knowledge of music theory, the use of notation and general musicianship skills. This will be done through the study of music from many genres, spread across the four areas of study.

These are:

- Musical Forms and Devices
- Music for Ensemble
- Film Music
- Popular Music

How might it be useful in the future?

It can lead you almost anywhere and develop important life skills along the way. Music is one of the best transferable GCSE subjects recognised by the Russell Group Universities so it is both enjoyable and really useful. This is because in music you will learn to work in a group; be creative and spontaneous; develop as an imaginative thinker; be a reflective and thoughtful worker; be confident and positive in your outlook; be independent and self-aware with the ability to self-assess; be a good self-manager; work to goals and develop an appreciation and openness to new experiences and ideas.

Assessment

Component 1: Performing – This will account for 30% of your GCSE (Marked by your teacher, moderated by Eduqas)

Component 2: Composing – This will account for 30% of your GCSE (Marked by your teacher, moderated by Eduqas)

Component 3: Appraising – This will account for 40% of your GCSE (A listening exam)

**Career paths you can follow
with a PE Qualification:**

- Physiotherapist
- Sports Coach
- Personal Trainer
- PE Teacher
- Sports Journalist



What will you study?

Specification Overview:

Physical factors affecting performance:

1.1 Applied anatomy and physiology

1.2 Physical training

**Socio-cultural issues and sports
psychology 2.1 Socio-cultural
influences**

2.2 Sports psychology

2.3 Health, fitness and wellbeing

Practical Performances

**Individual sport, team sports option
sport**

**Analysis and evaluation of
performance (AEP)**

How might it be useful in the future?

The GCSE course provides a link into further studies including A level and BTEC level 3, and to degree courses including Sports Science and Sports Coaching. In addition to developing your subject specific knowledge from the course topics (listed above) you will also use transferable skills including independent thinking, problem solving and analytical skills.

Assessment

**Component 01 Written Paper 1 hour: Physical factors affecting performance.
This will account for 30% of your final grade**

**Component 02 Written Paper 1 hour: Socio-cultural issues and sports
psychology. This will account for 30% of final grade**

**Component 03 Practical: Performance in physical education- Analysis and
evaluation of performance. This will account for 40% of final grade**

GCSE: Sociology



**Career paths you can follow
with a Sociology Qualification:**

- Legal profession
- Civil Service / Local authority
- Medical profession
- Education
- Social Work
- The Police Force
- Media

What will you study?

Social Structures, social processes/research and social issues. Including the following:

- Families
- Education
- Crime and Deviance
- Social Stratification and Inequality

Each of these topics allow you to explore aspects of your everyday life from a whole new perspective through discussions and debates. This new insight means that you are able to challenge and engage in the world in which we live.

How might it be useful in the future?

It will help you develop lots of skills that are valued by employers and universities such as logical argument and critical thinking.

You will improve your communication skills and understanding of society, which are important in all subjects and careers.

You will gain a respected academic qualification which is recognised throughout the world.

Assessment

Component 1: Understanding Social Processes Written examination: 1 hour 45 minutes
This will account for 50% of your final GCSE

Component 2: Understanding Social Structures Written examination: 1 hour 45 minutes
This will account for 50% of your final GCSE

Career paths you can follow with a Spanish Qualification:

- Almost any career in businesses that trade internationally
- Translator
- Interpreter
- Journalist
- Marketing & sales



What will you study?

- *You will practise and enhance your language skills in Listening, Speaking, Reading and Writing.*
- *You will study topics which relate to you and your life on a personal basis, e.g. teenage issues, work related themes, relationships, your personal dreams and aspirations.*
- *You will study topics about the world in which you live e.g. new technologies, the environment.*
- *You will have opportunities to study songs and texts by Spanish-speaking artists/writers.*

How might it be useful in the future?

You become smarter: studies have shown that learning a foreign language increases the functionality of your brain.

Your English improves: learning a foreign language draws your focus onto the mechanics of language and the skills that you acquire make you a more effective communicator.

It is estimated that the ability to speak a foreign can add 10–15% to your wage. For those looking to stand out in a tough jobs market or to add oomph to their CV when applying for university, learning a language could be just the thing.

Assessment

Listening & Understanding in Spanish written paper – This will account for 25%

of final GCSE Speaking in Spanish – This will account for 25% of final GCSE

Reading & Understanding in Spanish written – This will account for 25% of final

GCSE Writing in Spanish – This will account for 25% of final GCSE

Week beginning 12th February: Options booklet will be shared with students and their parents and carers and Options assembly will take place

15th February: Face to face making choices information evening for parents and carers

25th March: Face to face one to one appointments with a senior member of staff about your choices –during this meeting you will finalise and submit your GCSE options choices.

Summer Term: Letters home to parents confirming options.

In making your choices you should consider subjects which you are interested in, as you are more likely to be motivated and succeed in these subjects.

In addition, taking a Humanities subject (either History or Geography) is recommended for all students as they are considered to be "facilitating" subjects which will keep a wide range of A Level and University degree courses as well as career options open to you.

Your preferences will be considered and granted as far as it is feasible, but you must realise that the final decision will rest with the school. We will do all that we can to timetable you into the courses that suit your personal interests, aptitude and abilities and most importantly, that will enable you to achieve success. However, you must be aware that where very small numbers choose a subject, the subject will not run and therefore alternative choices will have to be made. If a particular course is oversubscribed, decisions about who should study the course will be taken by the relevant teachers and senior teachers, along with what preference number it was given by each student.

Don't forget to prioritise your preferred courses, remembering that number 1 is the course that you want to do most.

You must choose a total of 4 subjects, and put them in order with number 1 being the subject you most want to do and 2 reserve options.

First Name:

Surname:

Form Class:

Humanities Option: Geography/History

Choice 1:

Choice 2:

Choice 3:

Reserve 1:

Reserve 2:

You can choose 3 options from the following:

Art, Child Development, Computer Science, Construction and the Built Environment, Creative iMedia, Dance, Design Technology, Drama, Ethics & Philosophy, Food Preparation and Nutrition, French, Geography, History, Music, PE, Sociology, Spanish

You CAN choose both Geography and History

You CANNOT choose the following subjects together:

- **Construction, DT, and Food & Nutrition**
- **PE and Dance**
- **Computer Science and Creative iMedia**

Community Languages

If you are studying another language outside school, please complete the details below. When you collect your result, please bring a copy into the Exams Office for our records.

Language:.....Exam Board:

.....

If you are able to speak, write and understand another language then please get in touch with the Exams office in school: examsoffice@stopsleyhighschool.co.uk



STOPSLEY HIGH SCHOOL

Ambition | Endeavour | Success



www.stopsleyhighschool.co.uk

T: 01582 870900

E: admin@stopsleyhighschool.co.uk

Twitter & Facebook: @StopsleyHighSch

Stopsley High School

St Thomas' Road

Luton

LU2 7UX